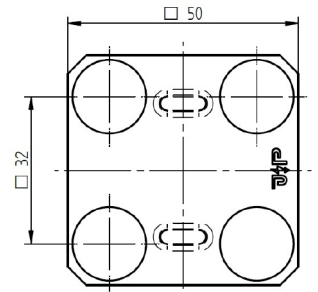




ELIT KK-FLAT-CU-25MM

Cross-clamp Cu flat conductor 25mm/25mm



Copper cross clamp for flat conductors for use in T-, cross and parallel connections

Technical description

Cross terminal according to EN 62561-1 for use in T-, cross and parallel connections.

Material: Copper (Cu)

Type: two-part, flat/flat

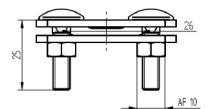
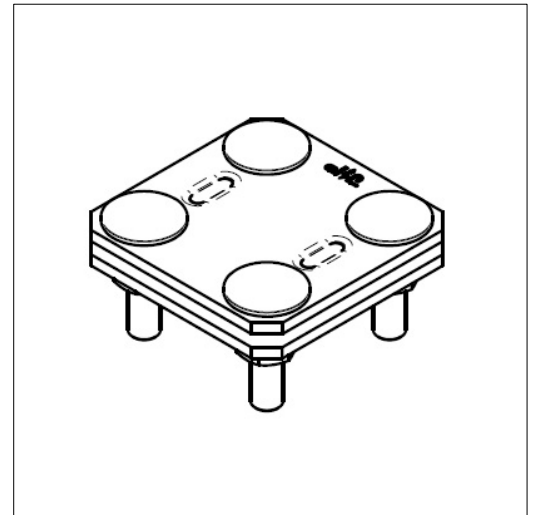
Conductor: 25 mm / 25 mm

Screws: 4 x M6 locking bolt with nut, in stainless steel A2

Advantages:

Cross terminal according to EN 62561-1 for use in T-, cross and parallel connections

Terminals flat conductors 25 mm / 25 mm



Product name/ Art.nr/ GTIN	ELIT KK-FLAT-CU-25MM/ 40180039/ 7070810039098
According to:	EN IEC 62561-1
Type of accessory/spare part	Clamp piece
Accessory	Yes
Material	Copper
Surface protection	Untreated